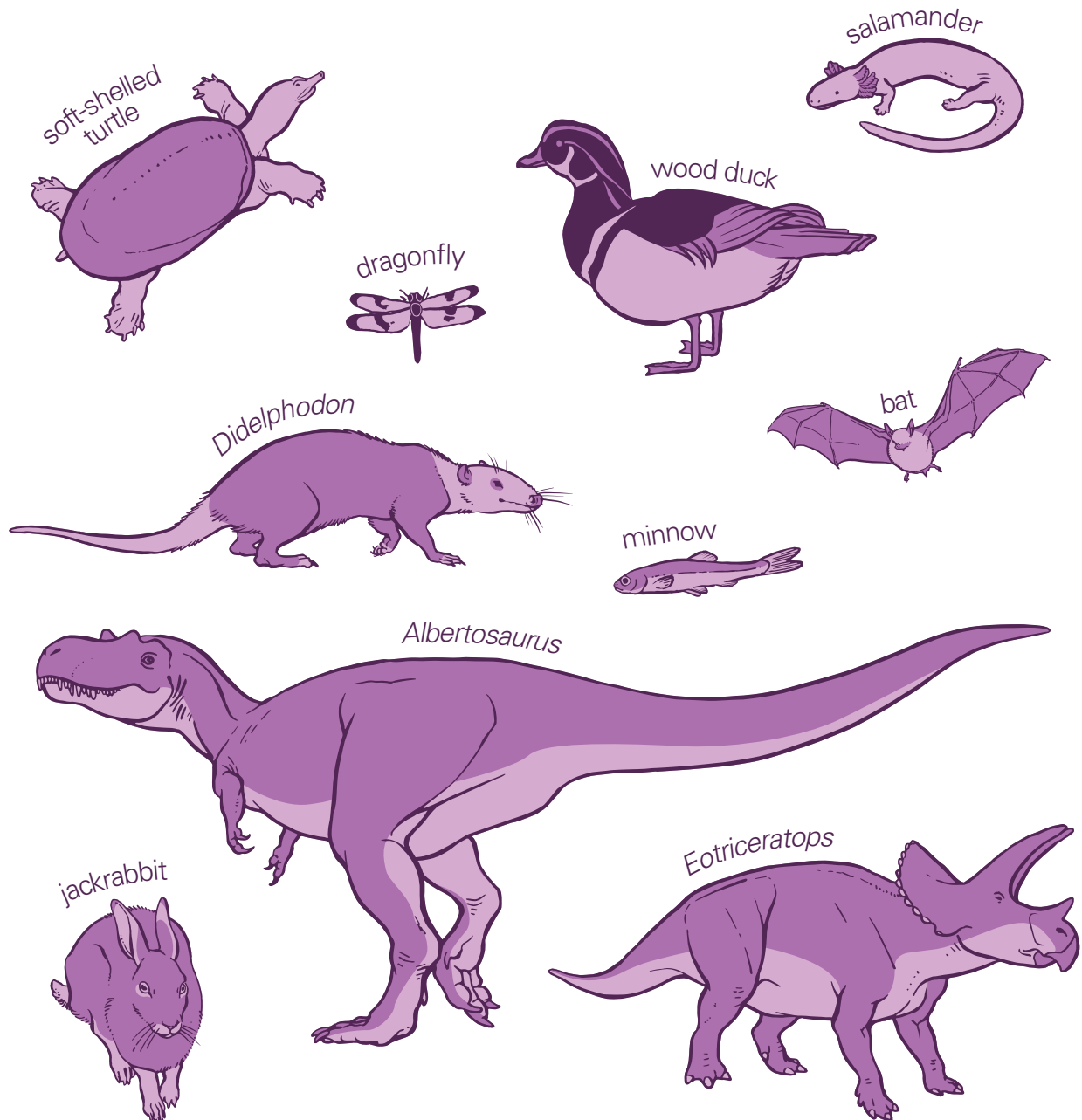


### CRETACEOUS ALBERTA

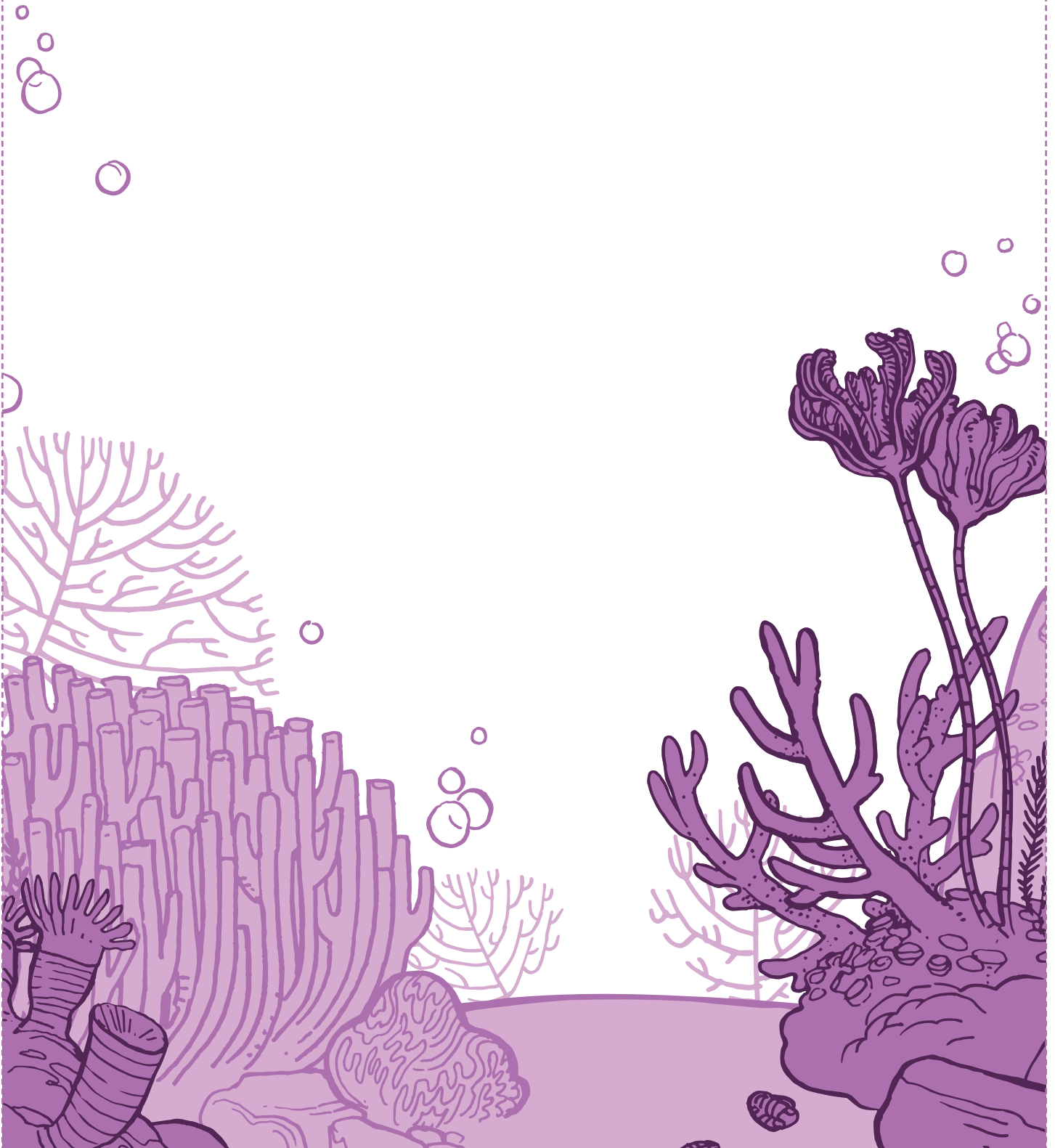
1. Welcome to *Cretaceous Alberta*! Step back in time and explore what Alberta looked like 69 million years ago. Many different animals lived at that time.  
**Circle the animals you can spy in the *Cretaceous Alberta* diorama.**



## DEVONIAN REEF

2. Your backbone is very important. It helps you control your body. Animals with backbones started to evolve during the Devonian Period and we call them "vertebrates." Fish, including sharks, have backbones.

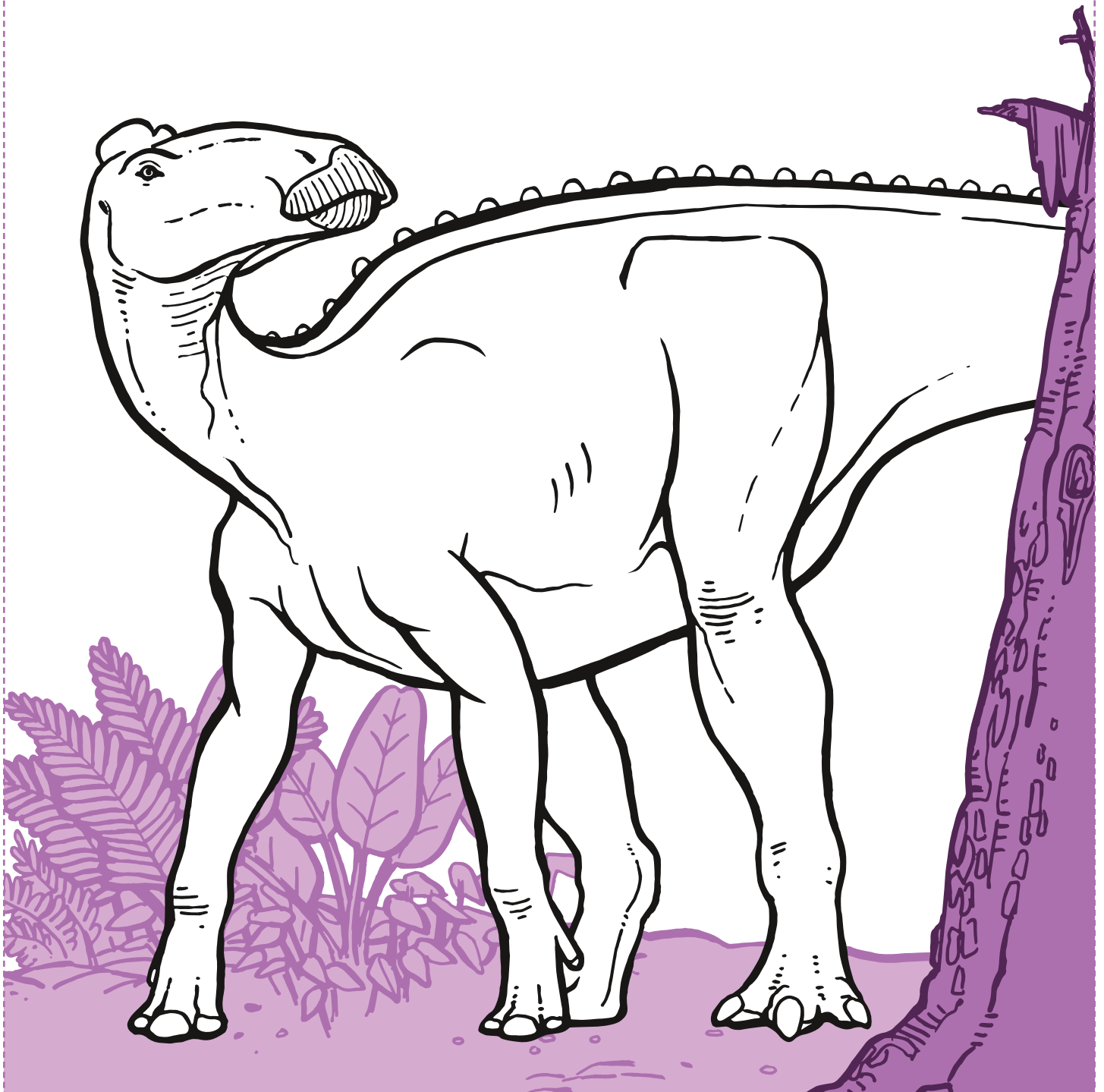
**Find a fish or shark and draw it here.**



## CRETACEOUS GARDEN

3. This garden has examples of the types of plants that lived in the Drumheller area during the Cretaceous Period. Herbivores (plant eaters) often have special patterns on their body, like spots or stripes, to help them hide from carnivores (meat eaters).

**Colour this dinosaur to help it hide in the *Cretaceous Garden*.**

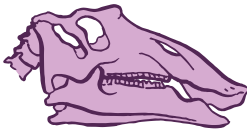


## DINOSAUR HALL

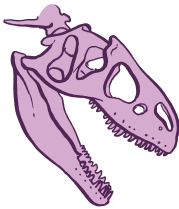
4. Different dinosaurs eat different foods. Sharp, pointy teeth are good for eating meat, and flatter or rounder teeth are good for eating plants. Find these dinosaurs in *Dinosaur Hall* and look at their teeth. What do you think each dinosaur would eat? **Draw a line from each dinosaur to the food it would likely eat.**



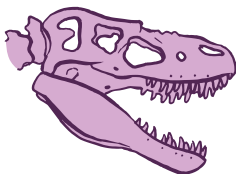
*Tyrannosaurus*



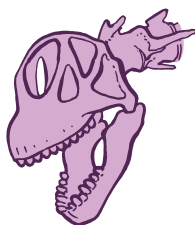
*Prosaurolophus*



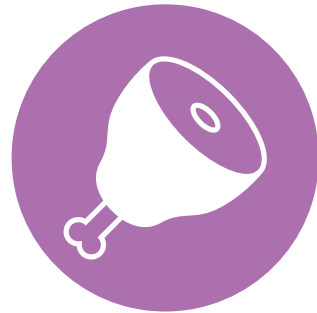
*Allosaurus*



*Gorgosaurus*



*Camarasaurus*



Meat



Plants